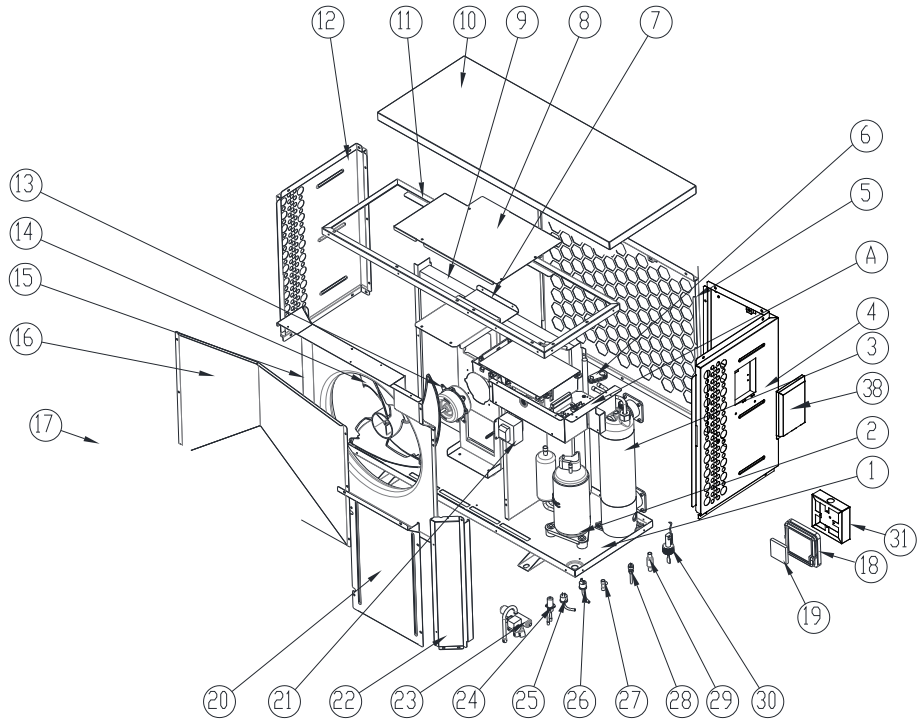


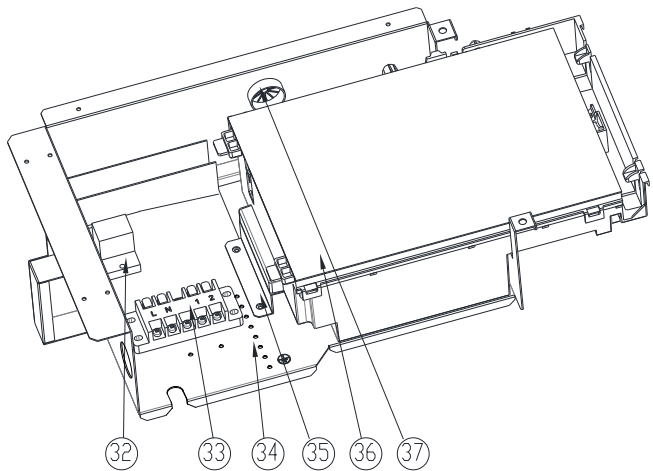
Exploded Diagram

Model and code: (PASRW030-P-BP6II-X-D)

1 Complete machine structure explosion diagram



A



Exploded Diagram

| No. | Code | Name | Specifications | Qty |
|-----|-----------------|------------------------------|--------------------------------------|-----|
| 1 | 80715434 | Chassis | Black matte 9005 | 1 |
| 2 | 20000-110448 | Compressor | SVB140FCAMC | 1 |
| 3 | 72300014 | Titanium heat exchanger | Φ9.52×7m Φ110 | 1 |
| 4 | 80715431 | Right side panel | Black matte 9005 | 1 |
| 5 | 80715437 | Back side panel | Black matte 9005 | 1 |
| 6 | 20000-260065 | Rubber damping block | Φ9.52-Φ19.05 | 1 |
| 7 | 80708597 | Motor bracket | Black gloss 9005 | 1 |
| 8 | 80708602 | Electric box cover | Black gloss 9005 | 1 |
| 9 | 80601432 | Finned heat exchanger | 650×550×Φ7×2 2.0 | 1 |
| 10 | 80714931 | Top cover | Black matte 9005 | 1 |
| 11 | 80708593 | Top panel | Black gloss 9005 | 1 |
| 12 | 80715441 | Left side panel | Black matte 9005 | 1 |
| 13 | 80200018 | Fan motor | ZWS40-E51 | 1 |
| 14 | 301030-00000006 | Fan blade | Φ405×134-Φ8(7)×3 | 1 |
| 15 | 80707103 | Wind deflector | Black gloss 9005 | 1 |
| 16 | 80708605 | Wind deflector | Black gloss 9005 | 1 |
| 17 | 80714934 | Wind deflector | Black matte 9005 and grey matte 7043 | 1 |
| 18 | 20000-220068 | Waterproof box | Tawny gloss | 1 |
| 19 | 72200555 | Display | CP203 | 1 |
| 20 | 80709204 | Panel | DX51D+Z80 t1.0 Black 9005 | 1 |
| 21 | 82500020 | Reactor | EL165FN | 1 |
| 22 | 80709202 | Bracket | DX51D+Z80 t1.2 Black 9005 | 1 |
| 23 | 2004-1437 | 4-way-vaes | SHF-9H-35U-P | 1 |
| 24 | 81000011 | EEV | DPF(B)1.65C-007 | 1 |
| 25 | 2001-3605 | High pressure switch | 3.2MPa/4.4MPa ±0.15 | 1 |
| 26 | 20000-360157 | Low pressure switch | 0.30MPa/0.15MPa ±0.05 | 1 |
| 27 | 2000-1460 | 3-way pipe | Φ6.5-2×Φ6.5(T)×0.75 T2M | 2 |
| 28 | 20000-140150 | Needle valve | Φ9.52-2×Φ6.35(T)×1.0 | 1 |
| 29 | 20000-140178 | Filter | Φ9.7-Φ9.7(Φ19) T2M | 2 |
| 30 | 83000068 | Water flow switch | PSL-1 3/4 | 1 |
| 31 | 20000-210070 | Wire controller mounting box | DX51D+Z80 t0.8 | 1 |
| 32 | 20000-360297 | Reply | HATF903AS30AC220 AC220V 30A | 1 |
| 33 | 4000-3901 | 5-position wiring base | RS9101C-5(450V~ 4mm2)(L、N、PE、1、2) | 1 |

Exploded Diagram

| No. | Code | Name | Specifications | Qty |
|-----|----------|-----------------------|---------------------------|-----|
| 34 | 80712592 | Electrical box | DX51D+Z80 t1.0 Black 9005 | 1 |
| 35 | 80708603 | Fixing plate | DX51D+Z80 t1.0 Black 9005 | 1 |
| 36 | 72200168 | Inverter drive module | 2AC32I27WO1 | 1 |
| 37 | 80900768 | Over wire sheath | NYLON66,94V-2(BLACK) | 4 |
| 38 | 80715440 | Junction box body | DX51D+Z80 t1.0 Black 9005 | 1 |